



# Stege Elementary School Campus Rebuild Project School Site Council

February 10, 2025



# Gathering Input

Design of a school must take into consideration many components from various sources.

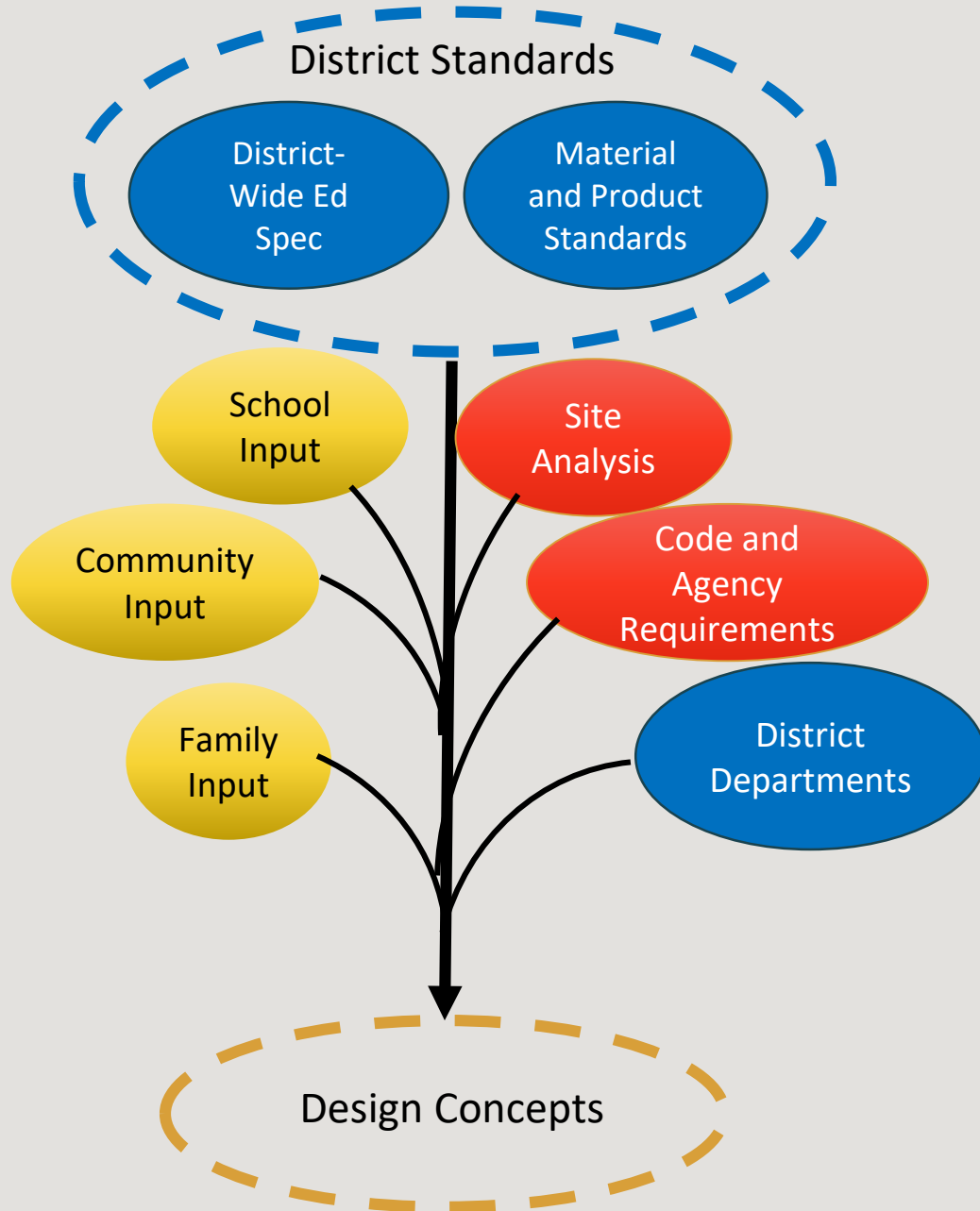
**District Standards** - Ensure functional learning environments, provide quality construction, and provide easier maintenance

**Site Analysis** - Existing site conditions, such as adjacent grades, utility location, and curb cuts

**Code and Agency Requirements** - Agencies enforce building, green, educational, health and other code requirements. Utility companies have requirements for service.

**District Departments** - We work closely with information technology, maintenance and options, nutrition services and educational services to ensure designs support operations and program

**Stege Input** - The design team will present at school meetings and conduct focus group and community meetings



# Incorporating a Site - Focused Lens

## Learning about Stege ES

- Community Culture
- Site Access
- Areas of concern



## Design Elements

- "Feel" of building/site
  - Scale
  - Entry Elements
  - Colors / Materials
  - Windows
  - Architectural Style
- Circulation paths
- Adjacency of spaces
- Site Elements

# Outreach



- ▣ Print flyers
- ▣ Mail postcards
- ▣ Construction Newsletters  
<https://forms.gle/NL3B5ZBcSPZ5GZSA8>
- ▣ Social media  
[@WCCUSDfacilities](#)
- ▣ Project Website  
[www.wccusd.net/Page/16972](http://www.wccusd.net/Page/16972)

- ▣ Quarterly Updates to the Board
- ▣ Quarterly Updates to the Community
- ▣ Monthly Updates to the CBOC
- ▣ School Site Council Meetings
- ▣ Coffee Chats

# Timeline

Three design packages are being created to fast-track the project as much as possible.

1. Demolition package - does not require DSA approval
  - Demolition is planned for Spring 2025
2. Site Ready Package – Designs the underground utilities and rough grading, which requires finalizing building footprints, plumbing, and low voltage room locations.
  - Submission to DSA in Summer of 2025
  - Construction Winter of 2025/26
3. Building Package – Defines the majority of the project
  - Completion of Design Development in May 2025
  - Submission to DSA in Fall of 2025
  - Construction Spring 2026 with move-in scheduled for August 2027





# Stege Elementary School Campus Replacement

Richmond, CA  
West Contra Costa Unified School District

February 10, 2025



**PERKINS —  
EASTMAN**







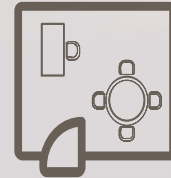
# AGENDA



Introduction



Guiding Principles



Recap



Site Options

# INITIAL GUIDING PRINCIPLES

## CELEBRATE STEGE COMMUNITY



Celebrate what it means to be a Stege Star. Spaces should be welcoming and support the whole student's wellness. It takes a community to nurture a "star" and this new school will in turn nurture the occupants by providing natural daylight, thermal comfort, acoustic control and healthy materials.

## SUPPORT OF THE EDUCATOR



Support the educator with small learning villages that provide spaces for small group instruction and collaboration spaces to share ideas and work on lesson plans between two grade level groupings. The new facility will have dedicated spaces for multi-tiered systems of support and a new staff workroom/lounge.

## CULTURE AS INCLUSIVE AND DISTINGUISHED



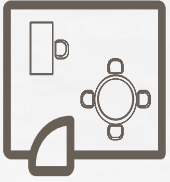
The new school will create spaces that is welcoming and representative of the cultures of this school. This will be done through color, form, bi-lingual graphics and the enhanced design of the places where the school celebrates and gathers both internally and around the campus grounds.

## REFLECT THE SURROUNDING NATURE



The site design will bring natural elements on the exterior into the building to reflect the local ecosystems. Each classroom village will have an outdoor learning space within nature that is a microcosm of the regional watershed and marshes.



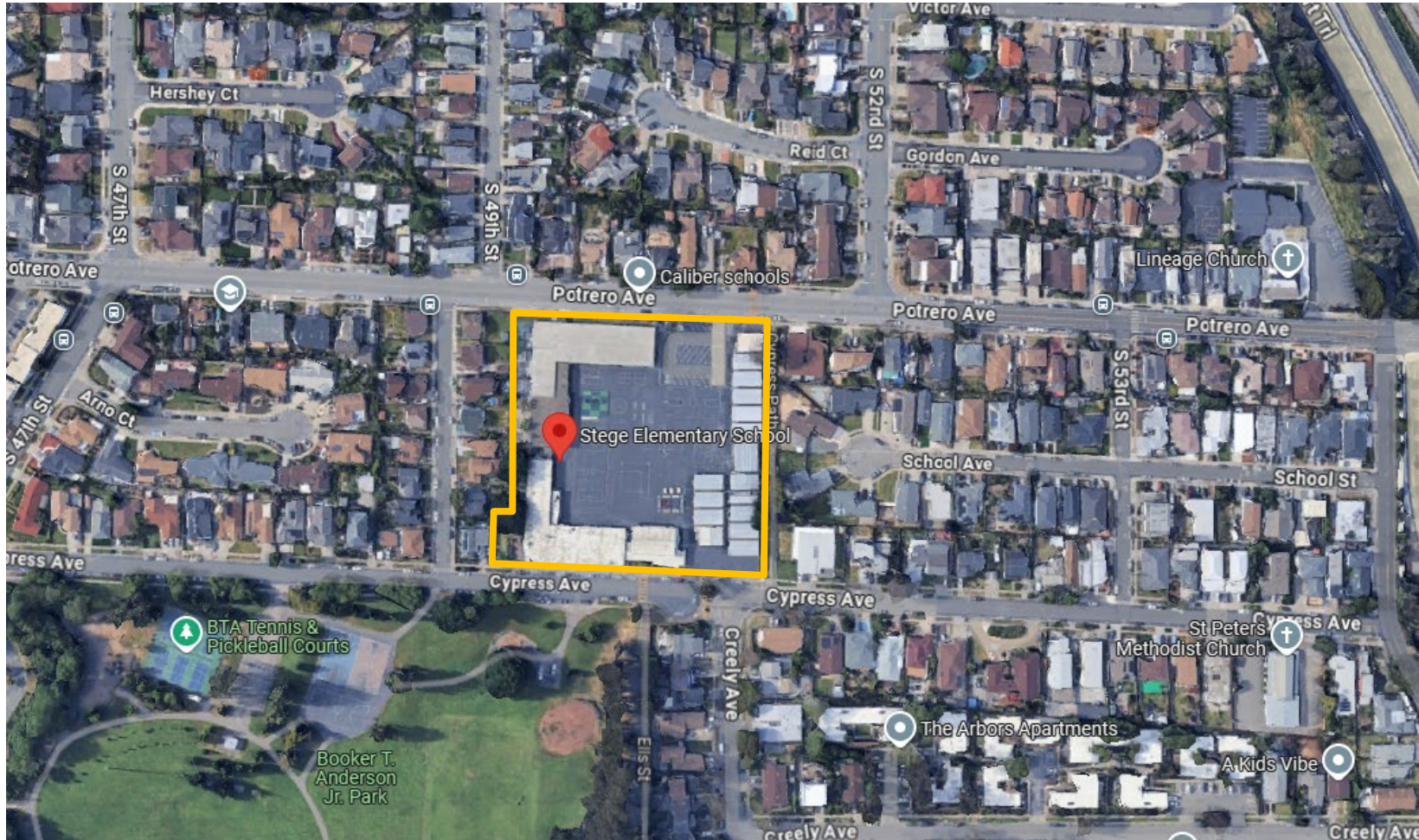


## Recap

- What we have heard
  - Community-Centered Campus
  - Indoor-Outdoor Learning & Play
  - Student Well-Being & Comfort
  - Green & Natural Spaces
  - Age-Appropriate Play & Activity Areas
  - Safety & Security



## Site Options – Existing



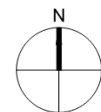
- Community-Centered Campus
- Indoor-Outdoor Learning & Play
- Student Well-Being & Comfort
- Green & Natural Spaces
- Age-Appropriate Play & Activity Areas
- Safety & Security



# Stege Elementary School

## Option 1

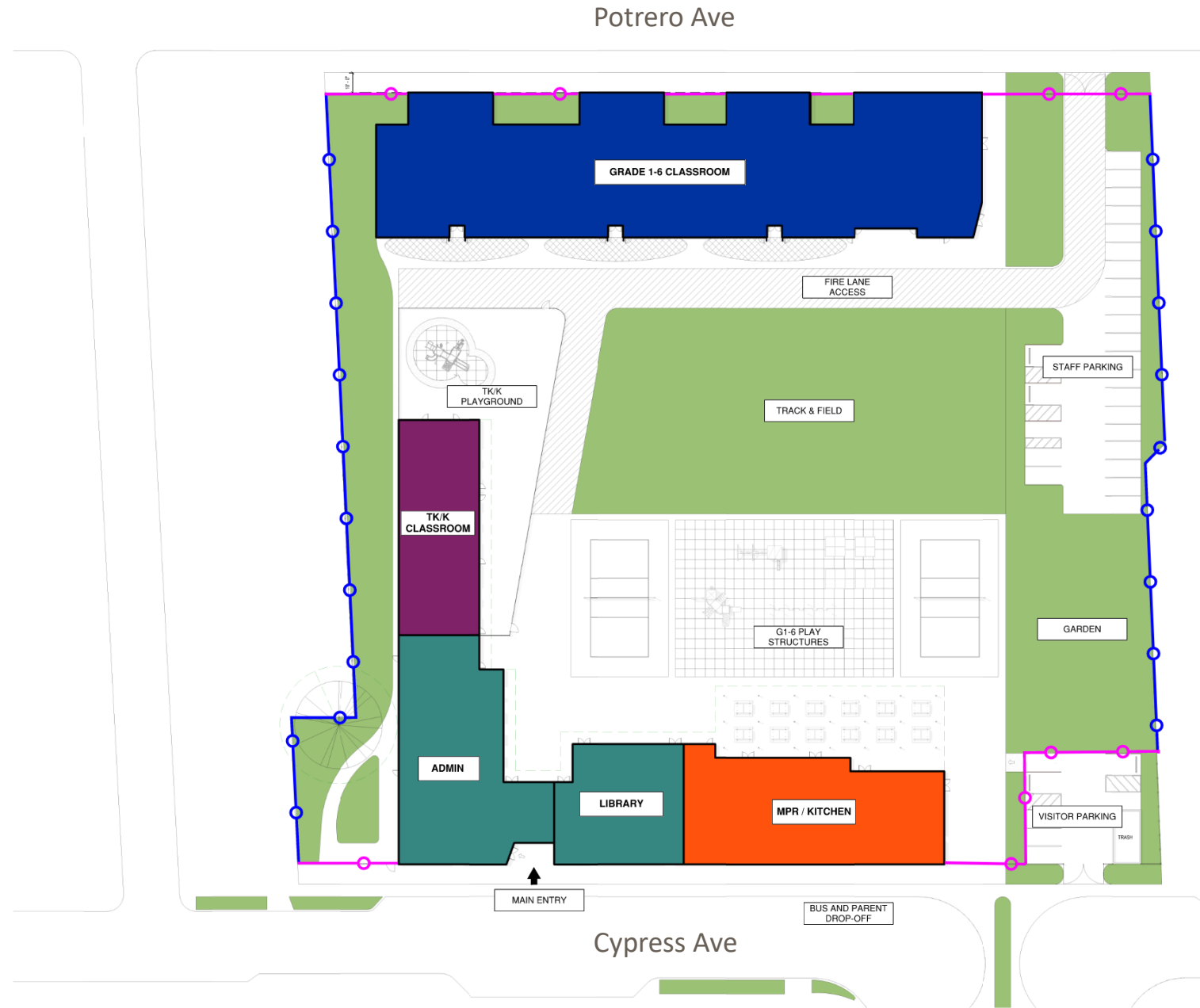
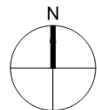
- Community-Centered Campus
- Indoor-Outdoor Learning & Play
- Student Well-Being & Comfort
- Green & Natural Spaces
- Age-Appropriate Play & Activity Areas
- Safety & Security



# Stege Elementary School

## Option 2

- Community-Centered Campus
- Indoor-Outdoor Learning & Play
- Student Well-Being & Comfort
- Green & Natural Spaces
- Age-Appropriate Play & Activity Areas
- Safety & Security





# Stege Elementary School

## Option 3

- Community-Centered Campus
- Indoor-Outdoor Learning & Play
- Student Well-Being & Comfort
- Green & Natural Spaces
- Age-Appropriate Play & Activity Areas
- Safety & Security

